

To view this newsletter in COLOR with CLICKABLE Web links, visit [www.lli.gmu.edu/enews42-09.htm](http://www.lli.gmu.edu/enews42-09.htm)



# OLLI E-News

The electronic newsletter for members of the Osher Lifelong Learning Institute at George Mason University



[OLLI Web Site](#) [What's New](#) [Catalog Info](#) [OLLI Videos](#) [Member Portal](#) [Contact Us](#)

CONTENTS FOR FRI, NOV 6, 2009

[Click to read about OLLI E-News](#)

### ALERTS

- > **TODAY: TOWN HALL MEETING.** 10:00, TA-1, about 2010 budget/dues. **All are invited.**
- > **BOARD RESIGNATION.** Director Bob Lawshe, elected May 2007, has resigned from the Board. Per our bylaws, the vacancy will be filled by an OLLI member appointed by the president and approved by the Board to fill the unexpired term, which ends June 2010.
- > **TALLWOOD CLOSED THANKSGIVING WEEK.** Remember that the office--and all of Tallwood--will be closed Mon, Nov 23, through Fri, Nov 27. Enjoy your Thanksgiving holiday.

### ARTICLES AND NOTICES

- > [LOOKING AT THE FUTURE FOR OLLI.](#) From the executive director. **By Thom Clement**
- > [HELP WANTED: ART HISTORY TEACHER.](#) Do you have a background or interest in Art History?
- > [OLLI BOOK CLUB.](#) *Islam: A Short History* by Karen Armstrong.
- > [SUPREME COURT VISIT.](#) Photo of OLLI trip.

### DEPARTMENTS

- > [KEY CONTACT INFORMATION.](#) How to contact OLLI.
- > [MASON ARTS AND MUSIC.](#) Upcoming performances. By Jan Bohall
- > [MASON HIGHLIGHTS.](#) Other Mason events. By Helen Ackerman
- > [COMING ATTRACTIONS.](#) Non-class OLLI events for the next

## LOOKING AT THE FUTURE FOR OLLI

*From the executive director*



By [Thom Clement](#), Executive Director



Left: some of the "Advance" attendees at Point of View; right, facilitator Dave Buczek.

**T**HERE WAS A REASON THAT OLLI'S PLANNING COMMITTEE chose to call the special October 23 meeting an "Advance" instead of a "Retreat." The focus of the day was looking ahead to the next 5-10 years for OLLI at Mason. True, the Board members and Planning Committee members "retreated" to the beautiful Point of View facility for the day. And yes, they did spend considerable time looking back at the rich traditions and history of our Institute. But the emphasis was on the future in four key areas:

- **PROGRAM:** Participants agreed that we have an outstanding program of courses and activities. There was consensus that we need to increase involvement of members to provide program offerings that appeal to current and prospective members and capitalize on the knowledge, expertise, and talents of members and community resources. It was recommended that the Board establish a task force to explore ways to identify and recruit new volunteers to carry out the good work of developing and managing new courses, including expansion of technology to offer high-quality courses at all locations.
- **MEMBERSHIP:** There was broad agreement that OLLI should position itself to attract members from the Boomer generation that are entering retirement years and to appeal to the increasingly diverse population of Northern Virginia. Because most new members join as a result of contacts from

friends and neighbors, the Board decided to monitor changes in membership and in the community to determine how best to attract and maintain a dynamic membership.

- **ORGANIZATION:** A task force will be formed to review the functions of OLLI's organization, responsibilities of the executive director, staff, committees, and leadership, along with the bylaws, and make recommendations to the Board. There are some committees whose functions need to be redefined or subdivided. There is a recognition that the Board now serves in an advisory and policy-making capacity, with operational details under the responsibility of the executive director and staff.
- **FACILITIES:** A special meeting of the Board was called in order to officially create a Facilities Committee whose responsibility will be to advise the Board regarding issues related to space for classes, socialization, and parking. In Fairfax, the role of this committee will relate largely to what the University will allow us to do on the existing Tallwood property. This committee will also be in a position to make recommendations regarding facility needs in Reston and Loudoun.

I am presenting more details of the discussions from the "Advance" as part of the Town Hall Meeting on November 6. Feedback and input from all OLLI members are welcome.

[Back to top](#)

## HELP WANTED: ART HISTORY TEACHER

*Do you have a background or interest in Art History?*

**We would like to offer ART HISTORY** at Reston or Loudoun or both campuses. If you have a background or interest in Art History and would be willing to develop and teach this subject, we want to hear from you. The first part could be scheduled as a spring course (March 22 - May 14, 2010) but a course description and instructor information must be submitted by December 1 in order to be included in the spring 2010 catalog.

OLLI has two excellent teaching videos and printed course guides on art (painting, sculpture, etc. with their associated history) by The Teaching Company. The videos could be used as teaching lectures with a person knowledgeable in the printed course guides serving as moderator for Q&A plus discussion.

For more information, or if you're ready to volunteer now, contact Art and Music Resource Group Co-chair Carole Richard.



[Back to top](#)

## OLLI BOOK CLUB

*Islam: A Short History by Karen Armstrong*

**THE OLLI BOOK CLUB WILL MEET** at 1:45 PM on Wednesday, November 11, at Tallwood. The book for discussion is *Islam: A Short History*, Karen Armstrong's concise political and religious history of the Muslim world. (View Google Books page on [this book.](#))

All OLLI members are welcome.

Submitted by Ceda McGrew, Book Club Coordinator.



[Back to top](#)

## SUPREME COURT VISIT

*Photo of OLLI trip*



On Friday, October 30, OLLI members enjoyed a tour of the United States Supreme Court given by OLLI's own Ben Gold (front row, center, in suit); Ben is a docent at the Court.

[Back to top](#)

**OLLI SPIRITWEAR**

Order sweatshirts, shirts, caps and tote bags with the OLLI/Mason logo at any time directly from the vendor for delivery to your home. Use [this Web site](#); click on "OLLI-GMU Store" to see the pictures, then click on each item to see more details. *Note: the pictures do not show our logo but it will be embroidered on the items that you order.*



**DEPARTMENTS**

**KEY CONTACT INFORMATION**

*How to contact OLLI*

**HERE IS A READY REFERENCE** on how to contact OLLI. For email addresses and phone numbers not listed below, please consult the online Membership Directory (log in to [Member Portal](#)).

- President: Emmett Fenlon ([email](#))
- Executive Director: [Thom Clement](#), phone 703-503-7866
- [OLLI Office](#), phone 703-503-3384
- Tallwood Administrator/OLLI Registrar: [Maria Buczek](#), phone 703-503-3384
- Board members: See [Organization page](#) (**Note:** To send an email to the entire Board, send it to the [office](#) or the *OLLI E-News* [editor](#), and your message will be forwarded to all members of the Board)
- Committee chairs, resource-group chairs: See [Organization page](#)
- Suggestions: [Online suggestion box](#)
- Letters to the editor or letters to Ms. Ollie Ettakit (etiquette matters): *OLLI E-News* Editor [Rod Zumbro](#), phone 703-569-2750

[Back to top](#)

**MASON ARTS AND MUSIC**

*Upcoming Mason performances, Nov 6-15*



By Jan Bohall, *OLLI E-News* Staff Writer

**FOR TICKETS**, call 1-888-945-2468 (phone orders are handled by [tickets.com](#)) or visit the Center for the Arts Box Office, Tue-Sat, 10:00-6:00. More info on tickets at the [CFA tickets page](#).



<p><b>The King's Singers</b></p>  <p>King's Singers</p> <p>Fri, Nov 6, 8:00 One of Britain's great musical institutions, this group is celebrated for their commitment to perfection in blend, balance and intonation. The sextet sings medieval to Renaissance music, lieder to folk, classical to pop and jazz, all a <i>cappella</i>. Admission: \$44, \$36, \$22 Concert Hall Come at 7:15 for a free artistic discussion on Grand Tier III.</p>	<p><b>Virsky Ukrainian National Dance Company</b></p>  <p>Virsky Ukrainian Nat. Dance</p> <p>Sat, Nov 7, 2:00 and 8:00 This folk ensemble is known for its dance prowess, infectious enthusiasm and vibrantly colored costumes. The Cossack warriors show their acrobatic skills and swordplay while female dancers glide gracefully across the stage, to celebrate their homeland with humor and optimism. Admission: \$46, \$38, \$23 Family friendly: Youth grade 12 and under, half-price with an adult. (<b>Note change from previous "age 12 and under."</b>) Concert Hall Come 45 minutes early for either performance for a free artistic discussion--Grand Tier III.</p>	<p><b>Circo Aereo Espresso</b></p>  <p>Circo Aereo: Espresso</p> <p>Sun, Nov 8, 4:00 This "theater without words" from Finland is recognized throughout Europe as a pioneer of the New Circus. Making its American debut this season, it mixes juggling and aerial work with cabaret theater, street performance, movement and humor. <a href="#">Web site</a> (includes a video). Admission: \$44, \$36, \$22 Family friendly: Youth grade 12 and under, half-price with an adult. (<b>Note change from "age 12 and under" last season.</b>) Concert Hall Come at 3:15 for a free artistic discussion on Grand Tier III.</p>
---	--	--

**GMU Symphonic Band Concert**

**With special guest: GMU Percussion Ensemble**

Tue, Nov 10, 8:00  
Faculty member John Kilkenny co-directs the Symphonic Band with Michael Nickens. The band will include Percy Grainger's Shepherd's Hey, Aaron Copeland's An Outdoor Overture and the Prelude and Fugue in B-Flat Minor of J. S. Bach. Under Mr. Kilkenny's direction, the Percussion Ensemble will present the Second Construction by John Cage, Conservatory Garden by Daniel Levitan and Debussy's String Quartet in G Minor, Movement II, among others.

Admission: \$10 seniors, \$15 other adults, Mason students free  
Concert Hall

**Shanghai Symphony Orchestra**

**Long Yu, conductor**  
**Peng Peng, piano**  
Sat, Nov 14, 8:00  
Formed in 1879 and now known as "the best in the Far East," the orchestra performs works of China's composers as well as

**Mason Dance Company Fall Concert**

Thu-Sat, Nov 12-14, 8:00  
Fri, Nov 13, 2:00  
The concert will feature a premiere by visiting guest artist Christopher d'Amboise.  
Admission: \$10 seniors/students, \$15 other adults, \$7 groups of 10 or more  
Harris Theater

**American Youth Philharmonic**  
**Featuring Matthew Sidney Hazelwood, guest conductor and Victoria Bass, cello**

**Jazz 4 Justice Featuring the GMU Jazz Ensemble and Combos**

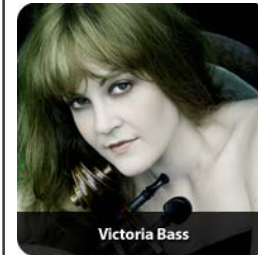
**Jim Carroll, director**  
Fri, Nov 13, 8:00  
This annual concert is a benefit for charities and pro bono work supported by the Fairfax Law Foundation and the music scholarship fund at George Mason's School of Music. Among their selections may be Johnny Mercer's "Summer Wind," Harlem Nocturne by Earl Hagen, Michelangelo by Astor Piazzolla and Duke Ellington's Caravan.  
Admission: \$15 seniors/students, \$20 other adults  
Concert Hall

**GMU Vocal Jazz Concert**  
**Stan Engebretson, conductor**  
**Julie Neish, asst. conductor**

Sun, Nov 15, 7:00  
Two vocal groups will perform, Soundcheque and the Timesquare Singers, with several

music of the Western world. Their program will include Rachmaninoff's Piano Concerto No. 2 with 17-year-old Peng Peng, Tchaikovsky's *Romeo and Juliet* overture and *China Air* suite by Bao Yuankai.

Admission: \$50, \$42, \$25  
Concert Hall  
Come at 7:15 for a free artistic discussion on Grand Tier III.



Victoria Bass

Sun, Nov 15, 1:00  
The American Youth Philharmonic Orchestras (AYPO) provides competitive world-class training and performance opportunities for young musicians, age 7-21. It is the Youth Orchestra in Residence at Mason's Center for the Arts.  
Admission: \$10 seniors/students, \$14 other adults  
Concert Hall

soloists. Soundcheque's offerings will include "Acapella in Acapulco" by The Real Group, "Autumn Leaves" arr. by Darren Motton and "Signed, Sealed and Delivered, I'm Yours" by Stevie Wonder, arr. by Engebretson. Timesquare Singers will do "Boy with Dreams" by Terry Barr, "I've Gotta Run" by Ann Marie White and "In Short" by Luke Walker.

Admission: Free, no ticket required  
Harris Theater

**Keyboard Conversations® With Jeffrey Siegel**



Jeffrey Siegel

**Chopin the Patriot**  
Sun, Nov 15, 7:00

Mr. Siegel continues his year-long celebration of Chopin with three polonaises that honor Chopin's homeland of Poland and the heroism of its people: the tender G Minor, the brooding C Minor and the heroic A-Flat, plus

several buoyant and poignant mazurkas.

Admission: \$38, \$30, \$19

Family Friendly: Youth grade 12 and under, half-price with an adult. (**Note change from "age 12 and under" last season.**)

Concert Hall

[Back to top](#)

## MASON HIGHLIGHTS *Other Mason events*



By Helen Ackerman, OLLI E-News Staff Writer

- **Vision Series Lecture.** Mon, Nov 9, 7:00, Center for the Arts: Mason Prof. Kathryn Jacobsen on "What Happens When Water is Cleaner? Tracking Transitions in Global Health." A reception with light refreshments will follow the lecture. Free. [Read details.](#)
- **Art Exhibit: Peter Marcus & Joan Hall, Large Scale Prints.** Mon, Nov 9, to Sat, Nov 21. Fine Arts Building, Gallery. Open 9:00 - 9:00 weekdays and weekends by appointment. Free.
- **School of Management Alumni Chapter Speaker: Andrew Ross Sorkin.** *New York Times* reporter and financial columnist Andrew Ross Sorkin talks about his book *Too Big to Fail: The Inside Story of How Wall Street and Washington Fought to Save the Financial System -- and Themselves.* Book signing to follow. Tue, Nov 10, 6:45 pm to 8:15 pm. Johnson Center, Cinema. Registration is required [online](#). Free.
- **Rising Up: The Amazonian Struggle in Peru.** Javier Diez Canseco, former Congressman and Senator from Peru, will discuss the intense debate and increased indigenous protests regarding the status of indigenous communities in the Peruvian Amazon. Thu, Nov 12, 10:30 to 12:30. SUB II, Rooms 3-4.
- **Cinema Series: *Bury My Heart at Wounded Knee.*** Thu, Nov 12, 6:00 and 9:00. Johnson Center, Cinema. Presented as part of American Indian and Alaskan Native Heritage Month. Mason students w/ID, free; Mason faculty and staff w/ID, \$1; general public, \$3.
- **Visiting Writer Series: Katherine Russell Rich.** A former *New York Times* journalist, Ms. Rich is the author of *Dreaming in Hindi: Coming Awake in Another Language.* Thu, Nov 12, 6:30. Research I, Room 163. Free.

[Back to top](#)

## COMING ATTRACTIONS

*Non-class events at OLLI for the next two weeks*

**T**HE FOLLOWING LIST covering the next two weeks is extracted for your convenience from the master calendar maintained by the office, with direct Web links added when available. See [Upcoming Non-Class Events](#) to view the real-time OLLI online calendar used by the office. *Note: Board, committee, resource-group and 'membership-type' meetings/events below are **highlighted in bold**. OLLI members are welcome at all Board, committee and resource-group meetings (except during executive sessions).*

Fri Nov 6	9am	Recorder Lessons - TA-3
	<b>10am</b>	<b>Town Hall Meeting - TA-1</b>
Tue Nov 10	11am	Knitting and Needlework Club - Lake Anne Church
Wed Nov 11	1:45pm	Book Club at Tallwood - TA-2
	1:45pm	Bridge Club - TA-3
	2pm	Special Event - F966, <a href="#">Brass Rubbing</a> - Tallwood
<b>Fri Nov 13</b>		<b>Fall Term Ends</b>
	8:30am	Special Event - F967, <a href="#">Abraham Lincoln's Washington City</a> - Bus Trip
	9am	Recorder Lessons - TA-3
	10am	Travel Club - TA-1
	10am	Drama Club - TA-3
	10am	Recorder Consort - TA-2
	10:30am	Special Event - L973, <a href="#">Tour Geography and Map Divisions</a> - Library of Congress
	11am	Homer Group - Social Room Annex
Tue Nov 17	<b>10am</b>	<b>Science, Tech, Health Resource Group Meeting - Annex</b>
	10:30am	Knitting and Needlework Club - Lake Anne Church
Wed Nov 18	10am	Bridge Club - TA-3
	<b>12pm</b>	<b>Planning Committee Meeting - Annex</b>
Thu Nov 19	9:30am	Photography Club - TA-1
Fri Nov 20	10am	Drama Club - TA-3
	10am	Recorder Consort - TA-2
	<b>10am</b>	<b>Board of Directors Meeting - TA-1</b>
	11am	Homer Group - Social Room Annex
Sat Nov 21	12:30pm	OLLI Personal Computer User Group - TA-1
<b>Mon Nov 23 - Fri Nov 27</b>		<b>OLLI Office Closed</b>

[Back to top](#)

---

About *OLLI E-News* and the member/volunteers who produce it



Rod Zumbro  
**Editor**



John West  
**Deputy Editor**



Barbara Kyriakakis  
**Associate Editor**

**Review Team:** Gordon Canyock, Michael Coyne, Barbara Kyriakakis, John West, Susanne Zumbro

**Database Manager:** Barbara Kyriakakis; **Photo Editor:** Michael Coyne

- **About this newsletter.** OLLI's weekly newsletter, *OLLI E-News*, is emailed to current OLLI members with email addresses on Fridays. When classes are in session, printed copies of this newsletter are distributed in classrooms. Comments, suggestions or complaints? Please contact Editor [Rod Zumbro](#) or Communications Committee Chair [Gordon Canyock](#).
- **Submissions.** We encourage members to submit news items, articles and photos for this newsletter. **The deadline to the editor is 7:00 pm Wed** (7:00 pm Mon for letters to the editor for which an OLLI response is appropriate) for that week's issue; **submissions earlier in the week are strongly encouraged and greatly appreciated.** Please limit articles to about 250 words. Submit material via email to Editor Rod Zumbro (email [rzumbro@gmu.edu](mailto:rzumbro@gmu.edu)).
- **Read the latest issue early.** The new weekly issue of *OLLI E-News* is posted to the OLLI Web site Thursday evening. Read it by visiting <http://www.olligmu.edu/pubs.htm#enews>, where you will find a list of the last 12 issues; click the latest issue listed.
- **Viewing or searching past issues.** Your options for finding items in past issues of *OLLI E-News* include viewing the [last 12 issues](#); [searching the content](#) of ALL issues for any word or words; and [searching our archive](#) of all past issues by date or issue number.

[Back to top](#)

Copyright © 2009 Osher Lifelong Learning Institute at George Mason University. Materials in this publication subject to OLLI-Mason copyright may be reproduced for noncommercial educational purposes if credit is given to OLLI-Mason.